

Condensate valves, reduced bore

172 series, female threads / female threads, DN 15-50, reduced bore

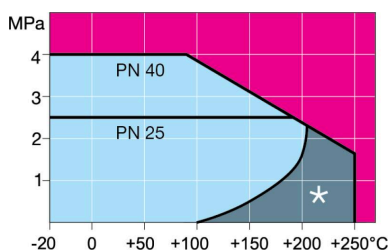
Body	DN 15-50 Steel, P235GH (1.0345)
Ball	DN 15-50 Stainless steel, X5CrNi18-10 (1.4301)
Ball seal	DN 15-50 PTFE+GF
Stem	DN 15-50 Stainless steel, X8CrNiS18-9 (1.4305)
Stem seal	DN 15-50 Graphite
Operation	DN 15-50 With zinc-plated steel handle



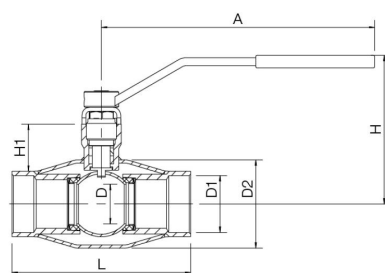
Operation conditions

DN 15-150: -20 °C – +250 °C
 Below -20 °C contact manufacturer
 Lowest allowed ambient temperature -40 °C

*) Not for superheated steam
 Leakage rate A (EN 12266-1)



DN 15-50



DN	PN	Product no.	A	D	D1	D2	H	H1	L	kg
15	40	172015	145	10	Rp 1/2	33.7	118	30	85	0.5
20	40	172020	145	15	Rp 3/4	42.4	122	31	100	0.6
25	40	172025	145	20	Rp 1	48.3	138	44	115	0.9
32	40	172032	145	25	Rp 1 1/4	60.8	142	43	130	1.2
40	40	172040	276	32	Rp 1 1/2	70.0	143	47	150	2.1
50	40	172050	276	40	Rp 2	88.9	150	48	180	2.8